

EVIO Labs Medford (pka Kenevir Research)
 540 East Vilas Road, Suite F, Central Point, OR 97502
 541-668-7444 / OLCC 010-1001626980D / www.EVIOLabs.com

Pineapple
Takilma Road Operator
 020-1002936AB2F (OLCC)



Confident Cannabis ID: 1812KR0063.2987

Sample ID: M181013-02

Matrix: Flower

METRC Batch #: 1A4010300019065000000923

Sampling Method/SOP: SOP.T.20.010

Date Sampled: 12/13/18 12:00

Date Accepted: 12/14/18

Results Valid Until: 12/13/19

Harvest/Process Lot ID: Multi Harvest

Batch ID: Pine 12/13/18

Batch Size (g): 6803

Unit for Sale:

Harvest/Production Date: 10/26/18

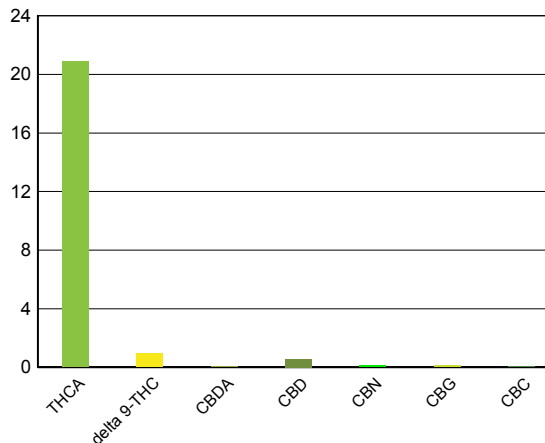
Cannabinoid Analysis

Date/Time Extracted: 12/19/18 15:38
 Date/Time Analyzed: 12/19/18 20:46

Analysis Method/SOP: SOP.T.40.020

Cannabinoids	LOQ(%)	mg/g	% weight
Total THC <small>((THCA*0.877)+Δ9THC)</small>		193	19.3
Total CBD <small>((CBDA*0.877)+CBD)</small>		6.2	0.620
THCA	0.050	209	20.9
delta 9-THC	0.050	9.31	0.931
delta 8-THC	0.050	< LOQ	< LOQ
CBDA	0.050	0.57	0.057
CBD	0.050	5.7	0.570
CBN	0.050	1.23	0.123
CBG	0.050	1.12	0.112
CBC	0.050	< LOQ	< LOQ
Sum of tested Cannabinoids	0.050	227	22.7

Cannabinoid Profile



Moisture Content

Date/Time Analyzed: 12/18/18 11:00
 Analysis Method/SOP: SOP.T.40.010


Moisture: 12.2 %

Water Activity

Date/Time Analyzed: 12/14/18 00:00
 Analysis Method/SOP: SOP.T.40.011

Water Activity: 0.505 aw

"Total THC" and "Total CBD" are calculated values and are an Oregon reporting requirement (OAR 333-064-0100). For Cannabinoid analysis, only delta 9-THC, THCA, CBD, CBDA are ORELAP accredited analytes. Cannabinoid values reported for plant matter are dry weight corrected; Oregon Water Activity action level is 0.65Aw; Samples above limit will be highlighted RED; FD = Field Duplicate; LOQ = Limit of Quantitation.

 Ian Riversong
 Laboratory Director - 12/21/2018

EVIO Labs Medford (pka Kenevir Research)
540 East Vilas Road, Suite F, Central Point, OR 97502
541-668-7444 / OLCC 010-1001626980D / www.EVIOLabs.com

Pineapple

Takilma Road Operator
020-1002936AB2F (OLCC)

Sample ID: M181013-02

Matrix: Flower

METRC Batch #:

1A4010300019065000000923

Date Sampled: 12/13/18 12:00

Date Accepted: 12/14/18

Results Valid Until: 12/13/19

Batch ID: Pine 12/13/18

Batch Size: 6803

Sampling Method/SOP: SOP.T.20.010

Pesticides

Date/Time Extracted: 12/18/18 15:17

Date/Time Analyzed: 12/19/2018 6:12:25AM

Analysis Method/SOP: SOP.T.30.060

Analyte	LOQ	Action Level	Result	Units	Type
Abamectin	0.250	0.5	< LOQ	ppm	
Acephate	0.200	0.4	< LOQ	ppm	Organophosphate insecticide
Acequinocyl	1.00	2	< LOQ	ppm	
Acetamiprid	0.200	0.2	< LOQ	ppm	Neonicotinoid insecticide
Aldicarb	0.200	0.4	< LOQ	ppm	Carbamate insecticide
Azoxystrobin	0.200	0.2	< LOQ	ppm	
Bifenazate	0.200	0.2	< LOQ	ppm	Unclassified insecticide
Bifenthrin	0.200	0.2	< LOQ	ppm	
Boscalid	0.200	0.4	< LOQ	ppm	Anilide fungicide
Carbaryl	0.200	0.2	< LOQ	ppm	Carbamate insecticide
Carbofuran	0.200	0.2	< LOQ	ppm	Carbamate insecticide
Chlorantraniliprole	0.200	0.2	< LOQ	ppm	Anthranilic diamide insecticide
Chlorfenapyr	0.500	1	< LOQ	ppm	Pyrazole insecticide
Chlorpyrifos	0.200	0.2	< LOQ	ppm	Organophosphate insecticide
Clofentezine	0.200	0.2	< LOQ	ppm	
Cyfluthrin	0.500	1	< LOQ	ppm	
Cypermethrin	0.500	1	< LOQ	ppm	
Daminozide	0.500	1	< LOQ	ppm	
DDVP (Dichlorvos)	0.500	1	< LOQ	ppm	
Diazinon	0.200	0.2	< LOQ	ppm	Organophosphate insecticide
Dimethoate	0.200	0.2	< LOQ	ppm	
Ethoprophos	0.200	0.2	< LOQ	ppm	
Etofenprox	0.200	0.4	< LOQ	ppm	
Etoxazole	0.200	0.2	< LOQ	ppm	Unclassified miticide
Fenoxycarb	0.200	0.2	< LOQ	ppm	
Fenpyroximate	0.200	0.4	< LOQ	ppm	
Fipronil	0.200	0.4	< LOQ	ppm	Pyrazole insecticide
Fonicamid	0.500	1	< LOQ	ppm	Pyridinecarboxamide insecticide
Fludioxonil	0.200	0.4	< LOQ	ppm	non-systemic fungicide
Hexythiazox	0.500	1	< LOQ	ppm	
Imazalil	0.200	0.2	< LOQ	ppm	Azole fungicide
Imidacloprid	0.200	0.4	< LOQ	ppm	Neonicotinoid insecticide
Kresoxim-methyl	0.200	0.4	< LOQ	ppm	
Malathion	0.200	0.2	< LOQ	ppm	
Metalaxyl	0.200	0.2	< LOQ	ppm	
Methiocarb	0.200	0.2	< LOQ	ppm	Carbamate insecticide



Ian Riversong
Laboratory Director - 12/21/2018

EVIO Labs Medford (pka Kenevir Research)
540 East Vilas Road, Suite F, Central Point, OR 97502
541-668-7444 / OLCC 010-1001626980D / www.EVIOLabs.com

Pineapple

Takilma Road Operator
020-1002936AB2F (OLCC)

Sample ID: M181013-02

Matrix: Flower

METRC Batch #:

1A401030001906500000923

Date Sampled: 12/13/18 12:00

Date Accepted: 12/14/18

Results Valid Until: 12/13/19

Batch ID: Pine 12/13/18

Batch Size: 6803

Sampling Method/SOP: SOP.T.20.010

Pesticides

Date/Time Extracted: 12/18/18 15:17

Date/Time Analyzed: 12/19/2018 6:12:25AM

Analysis Method/SOP: SOP.T.30.060

Analyte	LOQ	Action Level	Result	Units	Type
Methomyl	0.200	0.4	< LOQ	ppm	Carbamate insecticide
Methyl parathion	0.200	0.2	< LOQ	ppm	
MGK-264	0.200	0.2	< LOQ	ppm	
Myclobutanil	0.200	0.2	< LOQ	ppm	Azole fungicide
Naled	0.250	0.5	< LOQ	ppm	
Oxamyl	0.500	1	< LOQ	ppm	Carbamate insecticide
Paclobutrazol	0.200	0.4	< LOQ	ppm	Azole plant growth regulator
Permethrins	0.200	0.2	< LOQ	ppm	
Phosmet	0.200	0.2	< LOQ	ppm	Organophosphate insecticide
Piperonyl butoxide	1.00	2	< LOQ	ppm	
Prallethrin	0.200	0.2	< LOQ	ppm	
Propiconazole	0.200	0.4	< LOQ	ppm	
Propoxur	0.200	0.2	< LOQ	ppm	Carbamate insecticide
Pyrethrins	0.500	1	< LOQ	ppm	
Pyridaben	0.200	0.2	< LOQ	ppm	Unclassified insecticide
Spinosad	0.200	0.2	< LOQ	ppm	Spinosyn insecticide
Spiromesifen	0.200	0.2	< LOQ	ppm	Keto-enol insecticide
Spirotetramat	0.200	0.2	< LOQ	ppm	Keto-enol insecticide
Spiroxamine	0.200	0.4	< LOQ	ppm	Unclassified fungicide
Tebuconazole	0.200	0.4	< LOQ	ppm	
Thiacloprid	0.200	0.2	< LOQ	ppm	
Thiamethoxam	0.200	0.2	< LOQ	ppm	Neonicotinoid insectide
Trifloxystrobin	0.200	0.2	< LOQ	ppm	Strobin fungicide

Results above the action level fail Oregon state testing requirements and will be highlighted RED.

LOQ= Limit of Quantitation; PPM= Parts per million; ND= Not detected; NT= Not tested; AC= Above calibration range.

Pesticide testing performed in conjunction with EVIO Labs Medford, an ORELAP and ISO 17025 accredited laboratory.

PASS/FAIL status based on OAR 333-007.



Ian Riversong
Laboratory Director - 12/21/2018


EVIO Labs Medford (pka Kenevir Research)
540 East Vilas Road, Suite F, Central Point, OR 97502
541-668-7444 / OLCC 010-1001626980D / www.EVIOLabs.com

Quality Control

Batch: M18L075 - SOP.T.30.061 Pesticide Prep

Blank(M18L075-BLK1)			Extracted: 12/18/18 15:17		Analyzed: 12/19/18 06:33		
Analyte	Result	LOQ	Recovery Limits	Analyte	Result	LOQ	Recovery Limits
Cyfluthrin	< LOQ	0.500 (ppm)	< LOQ	Cypermethrin	< LOQ	0.500 (ppm)	< LOQ
MGK-264	< LOQ	0.200 (ppm)	< LOQ	Chlorfenapyr	< LOQ	0.500 (ppm)	< LOQ
Methyl parathion	< LOQ	0.200 (ppm)	< LOQ	Acequinocyl	< LOQ	1.00 (ppm)	< LOQ
Bifenthrin	< LOQ	0.200 (ppm)	< LOQ	Acephate	< LOQ	0.200 (ppm)	< LOQ
Abamectin	< LOQ	0.250 (ppm)	< LOQ	Acetamiprid	< LOQ	0.200 (ppm)	< LOQ
Aldicarb	< LOQ	0.200 (ppm)	< LOQ	Azoxystrobin	< LOQ	0.200 (ppm)	< LOQ
Bifenazate	< LOQ	0.200 (ppm)	< LOQ	Boscalid	< LOQ	0.200 (ppm)	< LOQ
Carbaryl	< LOQ	0.200 (ppm)	< LOQ	Carbofuran	< LOQ	0.200 (ppm)	< LOQ
Chlorantraniliprole	< LOQ	0.200 (ppm)	< LOQ	Chlorpyrifos	< LOQ	0.200 (ppm)	< LOQ
Clofentezine	< LOQ	0.200 (ppm)	< LOQ	Daminozide	< LOQ	0.500 (ppm)	< LOQ
DDVP (Dichlorvos)	< LOQ	0.500 (ppm)	< LOQ	Diazinon	< LOQ	0.200 (ppm)	< LOQ
Dimethoate	< LOQ	0.200 (ppm)	< LOQ	Ethoprophos	< LOQ	0.200 (ppm)	< LOQ
Etofenprox	< LOQ	0.200 (ppm)	< LOQ	Etoxazole	< LOQ	0.200 (ppm)	< LOQ
Fenoxycarb	< LOQ	0.200 (ppm)	< LOQ	Fenpyroximate	< LOQ	0.200 (ppm)	< LOQ
Fipronil	< LOQ	0.200 (ppm)	< LOQ	Flonicamid	< LOQ	0.500 (ppm)	< LOQ
Fludioxonil	< LOQ	0.200 (ppm)	< LOQ	Hexythiazox	< LOQ	0.500 (ppm)	< LOQ
Imazalil	< LOQ	0.200 (ppm)	< LOQ	Imidacloprid	< LOQ	0.200 (ppm)	< LOQ
Kresoxim-methyl	< LOQ	0.200 (ppm)	< LOQ	Malathion	< LOQ	0.200 (ppm)	< LOQ
Metalaxyl	< LOQ	0.200 (ppm)	< LOQ	Methiocarb	< LOQ	0.200 (ppm)	< LOQ
Methomyl	< LOQ	0.200 (ppm)	< LOQ	Myclobutanil	< LOQ	0.200 (ppm)	< LOQ
Naled	< LOQ	0.250 (ppm)	< LOQ	Oxamyl	< LOQ	0.500 (ppm)	< LOQ
Paclobutrazol	< LOQ	0.200 (ppm)	< LOQ	Permethrins	< LOQ	0.200 (ppm)	< LOQ
Phosmet	< LOQ	0.200 (ppm)	< LOQ	Piperonyl butoxide	< LOQ	1.00 (ppm)	< LOQ
Prallethrin	< LOQ	0.200 (ppm)	< LOQ	Propiconazole	< LOQ	0.200 (ppm)	< LOQ
Propoxur	< LOQ	0.200 (ppm)	< LOQ	Pyrethrins	< LOQ	0.500 (ppm)	< LOQ
Pyridaben	< LOQ	0.200 (ppm)	< LOQ	Spinosad	< LOQ	0.200 (ppm)	< LOQ
Spiromesifen	< LOQ	0.200 (ppm)	< LOQ	Spirotetramat	< LOQ	0.200 (ppm)	< LOQ
Spiroxamine	< LOQ	0.200 (ppm)	< LOQ	Tebuconazole	< LOQ	0.200 (ppm)	< LOQ
Thiacloprid	< LOQ	0.200 (ppm)	< LOQ	Thiamethoxam	< LOQ	0.200 (ppm)	< LOQ
Trifloxystrobin	< LOQ	0.200 (ppm)	< LOQ				

LCS(M18L075-BS1)			Extracted: 12/18/18 15:17		Analyzed: 12/19/18 07:00		
Analyte	% Recovery	LOQ	Recovery Limits	Analyte	% Recovery	LOQ	Recovery Limits
Cyfluthrin	95.4	0.500 (ppm)	30-170	Cypermethrin	90.1	0.500 (ppm)	30-170
MGK-264	84.5	0.200 (ppm)	50-150	Chlorfenapyr	117	0.500 (ppm)	50-150
Methyl parathion	156	0.200 (ppm)	30-170	Bifenthrin	76.0	0.200 (ppm)	50-150
Acephate	109	0.200 (ppm)	50-150	Abamectin	133	0.250 (ppm)	50-150


Ian Riversong
 Laboratory Director - 12/21/2018

EVIO Labs Medford (pka Kenevir Research)
540 East Vilas Road, Suite F, Central Point, OR 97502
541-668-7444 / OLCC 010-1001626980D / www.EVIOLabs.com

Quality Control


Batch: M18L075 - SOP.T.30.061 Pesticide Prep (Continued)

LCS(M18L075-BS1)			Extracted: 12/18/18 15:17		Analyzed: 12/19/18 05:25		
Analyte	% Recovery	LOQ	Recovery Limits	Analyte	% Recovery	LOQ	Recovery Limits
Acetamiprid	109	0.200 (ppm)	50-150	Aldicarb	109	0.200 (ppm)	50-150
Azoxystrobin	130	0.200 (ppm)	50-150	Bifenazate	107	0.200 (ppm)	50-150
Boscalid	126	0.200 (ppm)	50-150	Carbaryl	112	0.200 (ppm)	50-150
Carbofuran	83.6	0.200 (ppm)	50-150	Chlorantraniliprole	121	0.200 (ppm)	30-170
Chlorpyrifos	142	0.200 (ppm)	50-150	Clofentezine	95.3	0.200 (ppm)	50-150
DDVP (Dichlorvos)	76.8	0.500 (ppm)	50-150	Diazinon	94.7	0.200 (ppm)	50-150
Dimethoate	115	0.200 (ppm)	50-150	Ethoprophos	134	0.200 (ppm)	50-150
Etofenprox	122	0.200 (ppm)	50-150	Etoxazole	121	0.200 (ppm)	50-150
Fenoxycarb	111	0.200 (ppm)	50-150	Fenpyroximate	158	0.200 (ppm)	50-150
Fipronil	138	0.200 (ppm)	50-150	Flonicamid	90.6	0.500 (ppm)	50-150
Fludioxonil	104	0.200 (ppm)	50-150	Hexythiazox	107	0.500 (ppm)	50-150
Imazalil	54.3	0.200 (ppm)	50-150	Imidacloprid	100	0.200 (ppm)	50-150
Kresoxim-methyl	129	0.200 (ppm)	50-150	Malathion	105	0.200 (ppm)	50-150
Metalaxyl	110	0.200 (ppm)	50-150	Methiocarb	104	0.200 (ppm)	50-150
Methomyl	142	0.200 (ppm)	50-150	Myclobutanil	127	0.200 (ppm)	50-150
Naled	99.5	0.250 (ppm)	50-150	Oxamyl	122	0.500 (ppm)	50-150
Paclobutrazol	110	0.200 (ppm)	50-150	Permethrins	66.8	0.200 (ppm)	30-170
Phosmet	119	0.200 (ppm)	50-150	Piperonyl butoxide	122	1.00 (ppm)	50-150
Prallethrin	142	0.200 (ppm)	50-150	Propiconazole	116	0.200 (ppm)	50-150
Propoxur	86.4	0.200 (ppm)	50-150	Pyrethrins	131	0.500 (ppm)	50-150
Pyridaben	85.9	0.200 (ppm)	50-150	Spinosad	64.1	0.200 (ppm)	50-150
Spiromesifen	98.4	0.200 (ppm)	30-170	Spirotetramat	123	0.200 (ppm)	30-170
Spiroxamine	76.3	0.200 (ppm)	30-170	Tebuconazole	103	0.200 (ppm)	50-150
Thiacloprid	107	0.200 (ppm)	50-150	Thiamethoxam	91.2	0.200 (ppm)	50-150
Trifloxystrobin	141	0.200 (ppm)	50-150				

Batch: M18L085 - SOP.T.30.050 Prep for Cannabinoids

Blank(M18L085-BLK1)			Extracted: 12/19/18 15:38		Analyzed: 12/19/18 18:45		
Analyte	Result	LOQ	Recovery Limits	Analyte	Result	LOQ	Recovery Limits
THCA	< LOQ	0.050 (%)	< LOQ	delta 9-THC	< LOQ	0.050 (%)	< LOQ
delta 8-THC	< LOQ	0.050 (%)	< LOQ	CBDA	< LOQ	0.050 (%)	< LOQ
CBD	< LOQ	0.050 (%)	< LOQ	CBG	< LOQ	0.050 (%)	< LOQ
CBN	< LOQ	0.050 (%)	< LOQ	CBC	< LOQ	0.050 (%)	< LOQ
Sum of tested Cannabinoid:	< LOQ	0.050 (%)	< LOQ				

LCS(M18L085-BS1)			Extracted: 12/19/18 15:38		Analyzed: 12/19/18 19:02		
Analyte	% Recovery	LOQ	Recovery Limits	Analyte	% Recovery	LOQ	Recovery Limits


Ian Riversong
 Laboratory Director - 12/21/2018

EVIO Labs Medford (pka Kenevir Research)
 540 East Vilas Road, Suite F, Central Point, OR 97502
 541-668-7444 / OLCC 010-1001626980D / www.EVIOLabs.com

Quality Control

Batch: M18L085 - SOP.T.30.050 Prep for Cannabinoids (Continued)

LCS(M18L085-BS1)			Extracted: 12/19/18 15:38		Analyzed: 12/19/18 19:02		
Analyte	% Recovery	LOQ	Recovery Limits	Analyte	% Recovery	LOQ	Recovery Limits
THCA	94.1	(%)	70-130	delta 9-THC	92.4	(%)	70-130
CBDA	96.7	(%)	70-130	CBD	95.1	(%)	70-130



Ian Riversong
 Laboratory Director - 12/21/2018